



LS-60 Liquid Sampler

Designed with functionality in mind, the **Lighthouse LS-60 Liquid Sampler** is an integrated syringe sampler and optical particle counting system with an easy-to-use Windows™ based software interface.

Following a quality standard of reliability and dependability, Lighthouse Worldwide Solutions developed the **LS-60 Liquid Sampler** using the latest in laser optical particle counter technology. With a Sample Flow Rate of 60mL/min, the **LS-60** provides unprecedented measurement speed and accuracy.

The **LS-60** uses a high accuracy syringe pump flow control system and a high sample volume sensor. It is a perfect tool for multiple batch sampling applications.

The graphical user interface makes the **LS-60** easy to configure and operate. Data is automatically recorded and easily available in graph and tabular form in real time. Reports can be preconfigured and printed at the touch of a key.

Designed and built by
Lighthouse - a name you can trust.

www.golighthouse.com

Features:

- ★ 0.1 μm to 100 μm Size Ranges Available
- ★ Integrated Particle Counter
- ★ 8 Channel Sizes
- ★ Windows™-based Control Software
- ★ Sample Volumes from 1mL to 1 Liter
- ★ Syringe Size Options: 10 and 25 mL
- ★ Precise Syringe Pump Flow Control
- ★ Stainless Steel Enclosure
- ★ Built-in Magnetic Stirrer
- ★ Maximizes Sample Repeatability
- ★ Small Footprint
- ★ RS-485 MODBUS
- ★ Designed for Reliability

Benefits:

- ★ 2 Year Warranty
- ★ Easy to Install in Limited Space
- ★ Cost Effective Operation
- ★ Proven Data Integrity
- ★ Low Cost of Ownership



LS-60 Main Screen View



Specifications:

Size Range:	0.1 - 0.5 μm ; 0.2 - 2.0 μm ; 0.3 - 3.0 μm ; 0.5 - 100 μm
Channel Thresholds:	0.1, 0.15, 0.2, 0.25, 0.3, 0.35, 0.4, 0.5 μm ; 0.2, 0.3, 0.4, 0.5, 0.7, 1.0, 1.3, 2.0 μm ; 0.3, 0.5, 0.7, 1.0, 1.3, 2.0, 2.5, 3.0 μm ; 0.5, 1.0, 2.0, 5.0, 10.0, 25.0, 50.0, 100.0 μm
Number of Channels:	8
Flow Rate:	60 mL per minute
Laser Source:	Laser Diode
Calibration:	NIST Traceable
Syringe Sizes:	10mL, 25mL
Maximum Sample:	1 liter
Communication Modes:	RS-485 MODBUS
Wetted Parts:	Teflon (PFA), Quartz, Kalrez, Kel F, Polypropylene
Stirrer:	Magnetic, Adjustable Speed
Connectors:	RJ45
Supporting Software:	LS-60 Software
Enclosure:	Stainless Steel
Power:	24 VDC
Dimensions:	12.875"(l) x 8.75"(w) x 14.75"(h) [32.7 x 22.2 x 37.5cm]
Weight:	20.5 lbs (9.3kg)

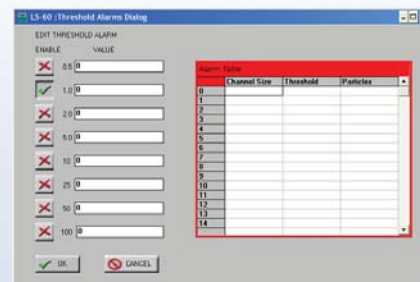
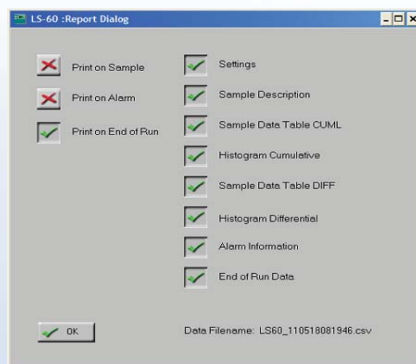
Environmental Conditions:

Operating: 50°F to 104°F (10°C to 40°C) / 20% to 95% non-condensing
Storage: 14°F to 122°F (-10°C to 50°C) / Up to 98% non-condensing

Accessories:

Included: Operating Manual on CD; LS-60 Software; Power Supply; Flow Cell Cleaning Solution and Brush; Cable; RJ-45 to DB9 Adapter; Sample Tubing; Nut and Ferrule Kit; 500mL Beaker; Magnetic Stir Bar.

Optional: Printed Operating Manual; 10mL Syringe; 5-piece Beaker Set (50, 100, 250, 600, 1000mL Beakers); Carrying Case with Wheels; Certificate of Origin.



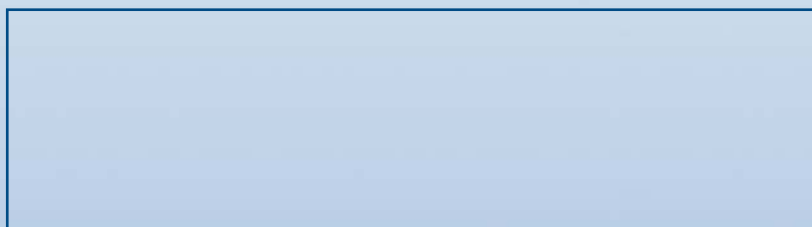
LS-60 Setup Screens

Manufactured by:



www.golighthouse.com
info@golighthouse.com

Distributed by:



Tel: 800 945 5905 (Sales and Service)
510 438 0500 (Outside of USA)